



H867

Additional Instructions

Tilting support

IMPORTANT
READ CAREFULLY BEFORE USE
KEEP FOR FUTURE REFERENCE

All rights reserved.

Property of Dürkopp Adler GmbH and protected by copyright. Any reuse of these contents, including extracts, is prohibited without the prior written approval of Dürkopp Adler GmbH.

Copyright © Dürkopp Adler GmbH 2021

1	Components of the parts set.....	3
2	Function of the parts set.....	4
3	Installing the parts set	6

1 Components of the parts set

Check whether the scope of delivery for parts set 0867 142224 is correct prior to installing the tilting support.

Part number	Quantity	Description
9202 002887	3	Screw M6x12
9351 000087	4	Adjusting ring
0867 142200	2	Ring
0867 142260	2	Bolt
0867 142190	1	Holder
0867 142240	1	Lever
9706 000314	1	Gas spring
9202 003317	4	Screw M8x25
0867 142173	1	Holder
0867 142250	2	Bolt
0867 142210	1	Lever

2 Function of the parts set

CAUTION



Risk of crushing due to the weight of the machine!

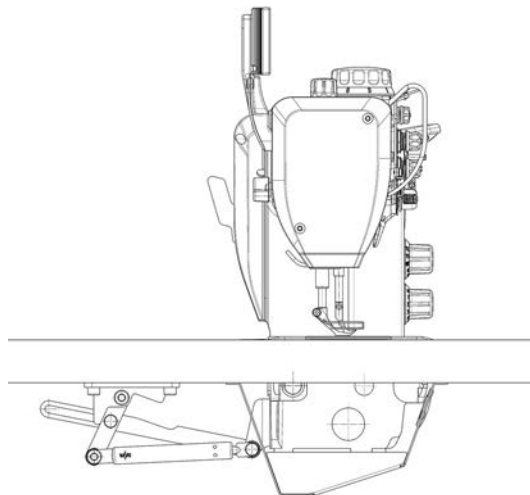
The machine should only be tilted by qualified technicians.

The tilting support is designed to allow for easier tilting of the machine head. It also increases safety for the user while tilting back the machine.

Position 1 - machine in working position

In this position, the gas spring mechanism acts on the base plate. This effect makes it easier to tilt the machine head back into the service position.

Fig. 1: Position 1

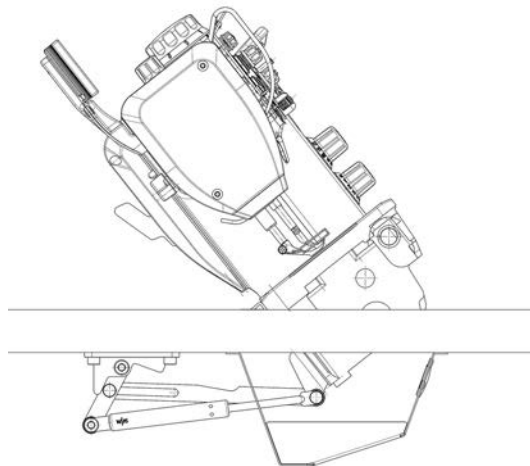


Position 2 - machine in idle position

The machine head is slowed down by the lever when being tilted back. This deceleration prevents an uncontrolled tilting motion and stops the machine head from colliding with the base plate on account of the machine head's own weight. This feature prevents damage to the machine as well as injury to the user.

Tilting the machine head all the way into the service position requires that the machine be tilted backwards by applying active force.

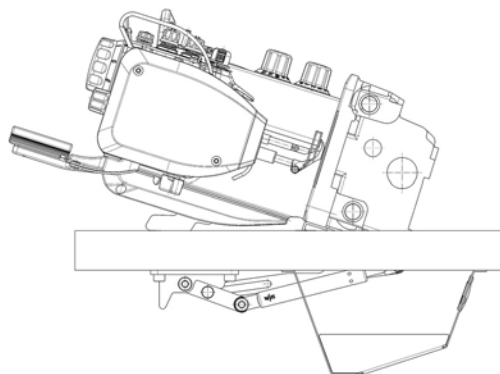
Fig. 2: Position 2



Position 3 - machine in service position

In this position, the machine head is tilted back all the way. The parts set of the tilting support will also act as a limit stop in this position. This stops the machine head from slipping out of the hinges and, consequently, the table top.

Fig. 3: Position 3



3 Installing the parts set

WARNING



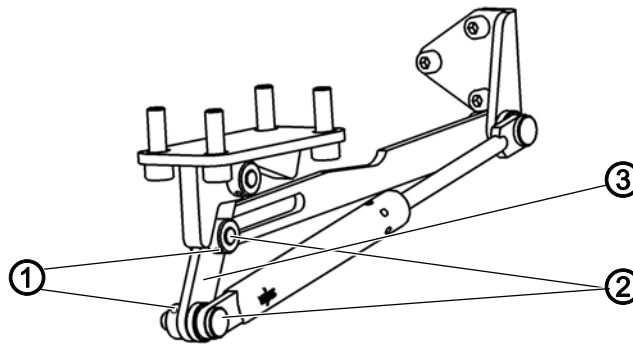
Risk of crushing due to the weight of the machine!

Secure the machine against tipping during installation.

Installation of the tilting support by qualified technicians **ONLY!**

Switch off the machine prior to installation.

Fig. 4: Installation I



(1) - Adjusting screws
(2) - Bolt

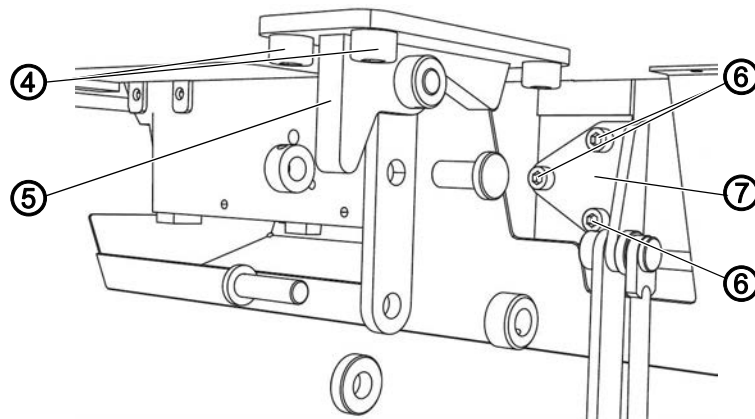
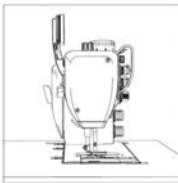
(3) - Lever



Handling step

1. Loosen the adjusting screws (1).
2. Pull out the bolt (2) on the lever (3).

Fig. 5: Installation II



(4) - Screws
(5) - Holder

(6) - Holder
(7) - Screws



Handling step

1. Set the machine to the working position.
2. Screw the holder (5) into the table top using the screws (4).
3. Screw the holder (6) into the base plate using the screws (7).

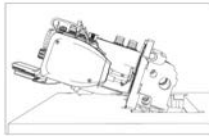
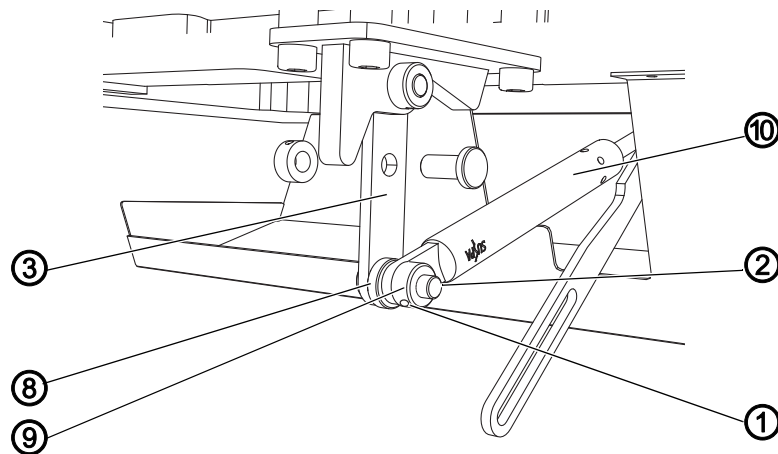


Fig. 6: Installation III



- (1) - Adjusting screw
- (2) - Bolt
- (3) - Lever

- (8) - Spacer ring
- (9) - Adjusting ring
- (10) - Gas spring



Handling step

1. Tilt the machine head back into the service position.
2. Use the bolt (2) to connect the lever (3), the spacer ring (8) and the eye of the gas spring (10).
3. Fit the adjusting ring (9) onto the bolt (2) and tighten until there is no more axial play.
4. Tighten the adjusting screw (1).

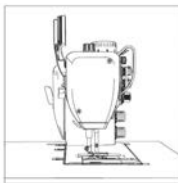
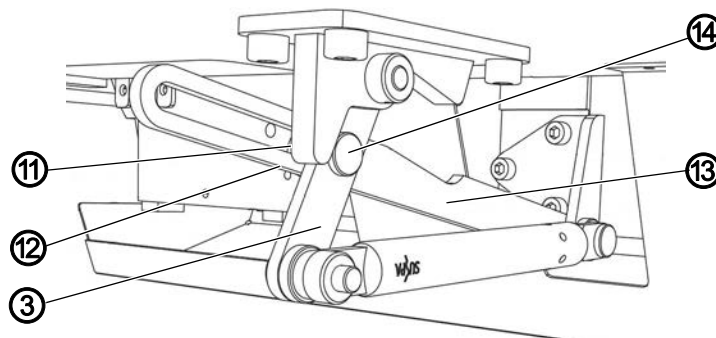


Fig. 7: Installation IV



- (3) - Lever
- (11) - Adjusting ring
- (12) - Adjusting screw

- (13) - Connecting rod
- (14) - Bolt



Handling step

1. Tilt the machine back into the working position.
2. Use the bolt (14) to connect the lever (3) and the connecting rod (13).
3. Fit the adjusting ring (11) onto the bolt (14) and tighten until there is no more axial play.
4. Tighten the adjusting screw (12).



DÜRKOPP ADLER GmbH
Potsdamer Str. 190
33719 Bielefeld
Germany
Phone: +49 (0) 521 925 00
Email: service@duerkopp-adler.com
www.duerkopp-adler.com