



650-10

Additional Instructions

Replacing sewing equipment E3

IMPORTANT
READ CAREFULLY BEFORE USE
KEEP FOR FUTURE REFERENCE

All rights reserved.

Property of Dürkopp Adler GmbH and protected by copyright. Any reuse of these contents, including extracts, is prohibited without the prior written approval of Dürkopp Adler GmbH.

Copyright © Dürkopp Adler GmbH 2021

1	General information	3
2	Conversion / Assembly	4
2.1	Performing mechanical conversion.....	4
2.2	Software settings	7

1 General information

For light sewing material such as chiffon, silk or thin cotton, the E3 sewing equipment produces better smooth sewing results and less seam puckering.

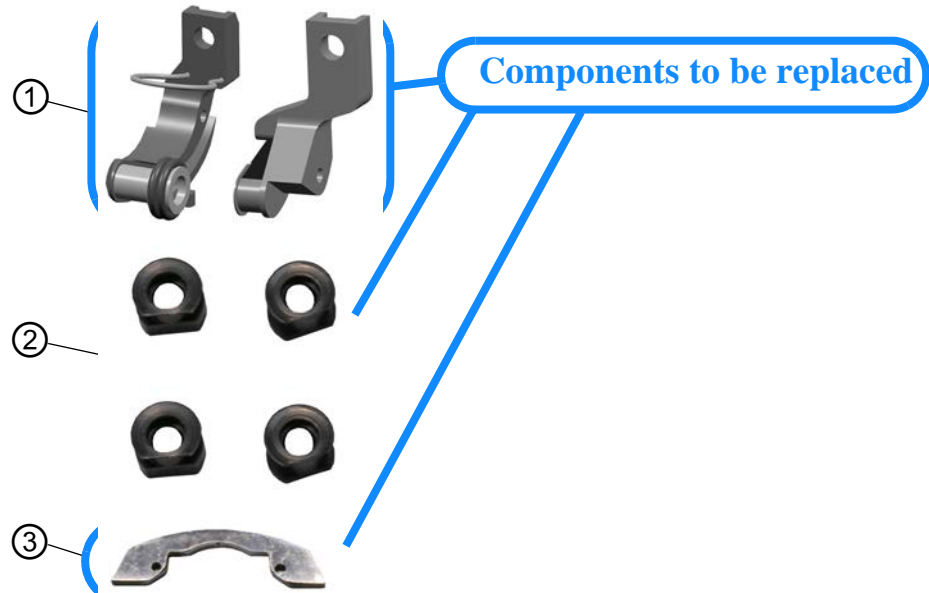
Check whether the scope of delivery for kit 0650 E00003 is correct prior to installation.

Part number	Quantity	Description
0650 200030	1	Throat plate E3
0650 220074	1	Presser foot E3
0650 220080	1	Presser foot E3
0650 340710	1	Belt guide left E3
0650 340720	1	Belt guide right E3
9202 022087	1	Screw M4x12
9202 042097	1	Screw M4x16
9330 700097	2	Washer 4,3
0791 650703 EN	1	Additional Instructions

2 Conversion / Assembly

2.1 Performing mechanical conversion

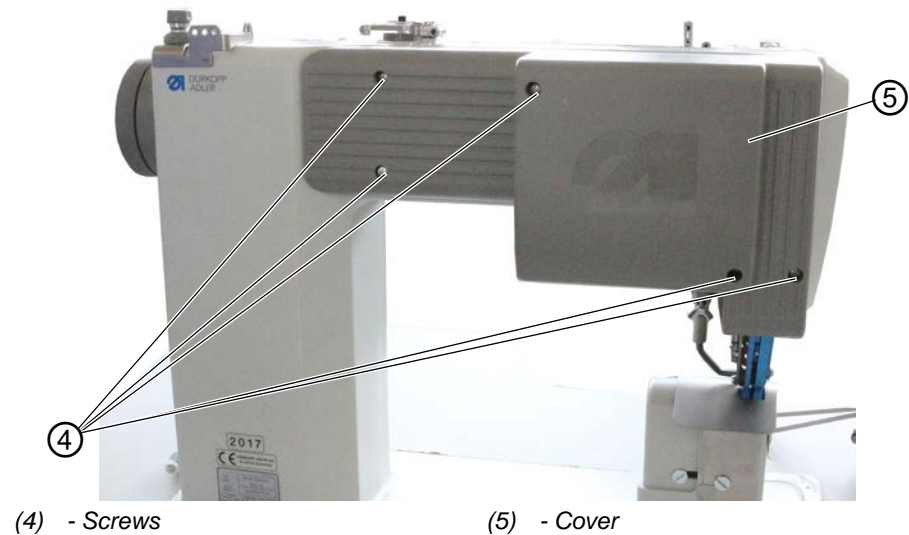
Fig. 1: Performing mechanical conversion (1)



(1) - New sewing feet
(2) - New belt guides

(3) - New throat plate

Fig. 2: Performing mechanical conversion (2)



(4) - Screws

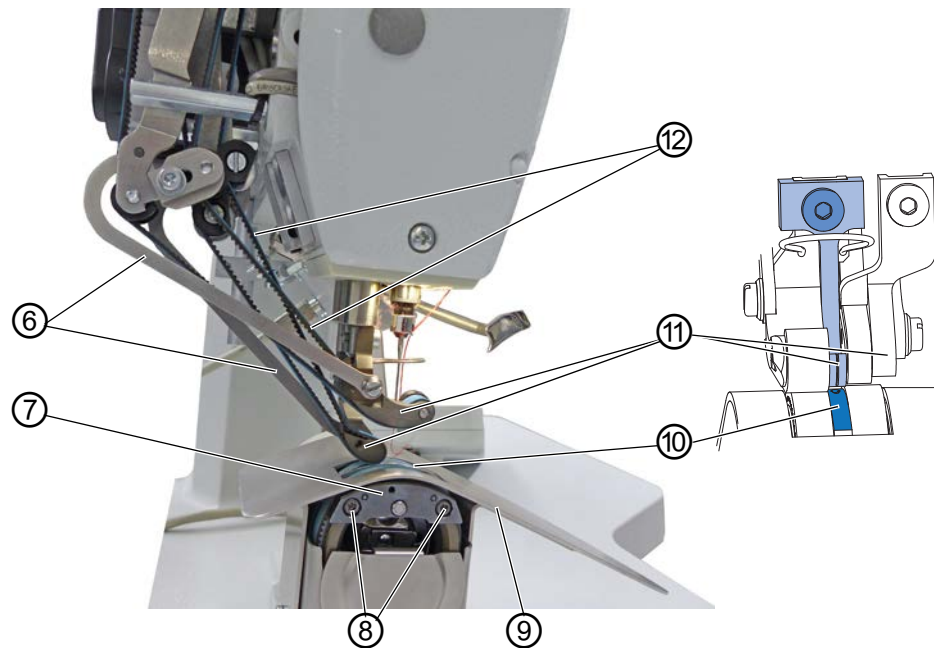
(5) - Cover



To replace the sewing equipment:

1. Switch off the machine.
2. Remove the rear cover (5) by loosening the screws (4).

Fig. 3: Performing mechanical conversion (3)



- | | |
|-----------------------------|-----------------------|
| (6) - Coupling rods | (9) - Fabric table |
| (7) - Middle section holder | (10) - Throat plate |
| (8) - Screw | (11) - Sewing feet |
| | (12) - Conveyor belts |

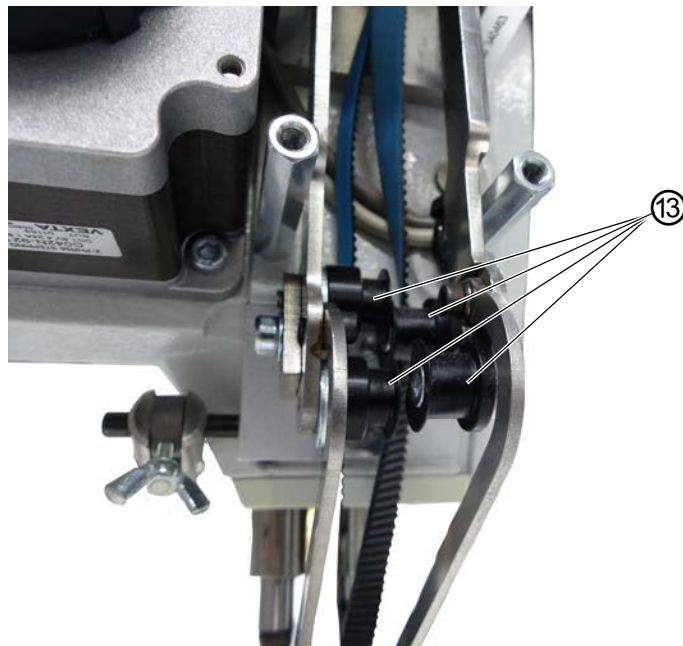


3. Remove the needle.
4. Loosen the coupling rods (6) from the sewing feet (11).
5. Disassemble the sewing feet (11).
6. Remove the conveyor belts (12).
7. Disassemble the fabric table (9).
8. Loosen screws (8) so that the middle section holder (7) is loose enough to remove the throat plate (10).
9. Remove the throat plate (10).
10. Assemble the throat plate (3) and tighten the screws (8) again.

**Important**

Make sure that the middle part holder (4) is located in the slot of the hook middle part.

Fig. 4: Performing mechanical conversion (4)

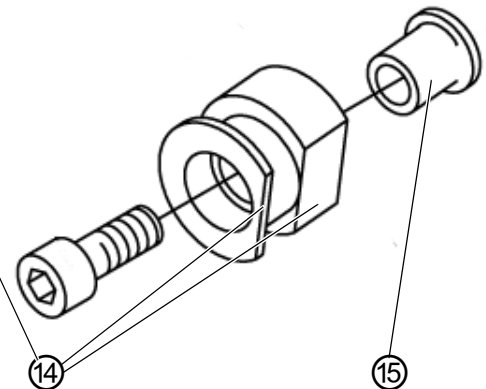
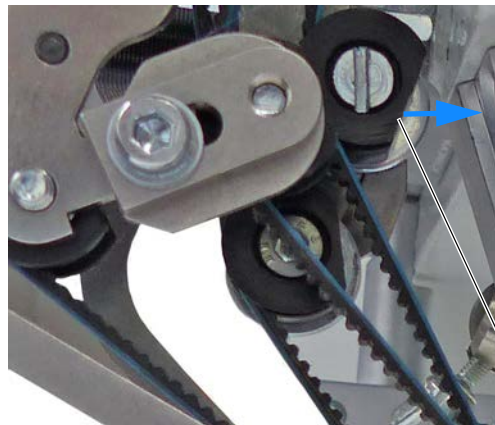


(13) - Belt guides



11. Remove the belt guides (13) and assemble new belt guides (2).

Fig. 5: Performing mechanical conversion (5)



(14) - Slant

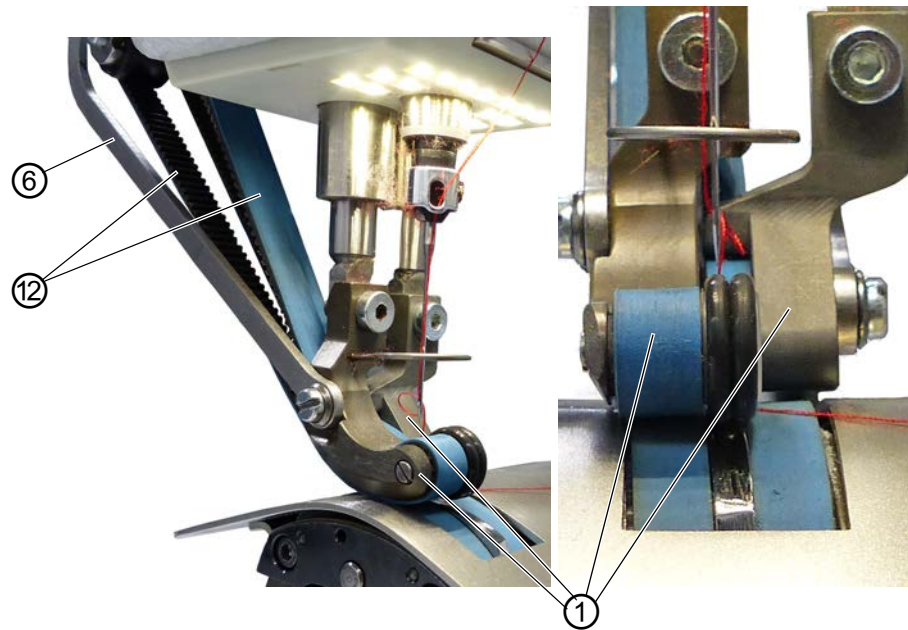
(15) - Sleeve



Important

Use the sleeves (15) from the old belt guides (13).
Make sure that the slant (14) of the inner belt guides face the machine arm.



Fig. 6: Performing mechanical conversion (6)



(6) - Coupling rod
(12) - Conveyor belts

(1) - New sewing feet



12. Insert the conveyor belts (12) into the sewing feet (1).
13. Assemble the new sewing feet (1).
14. Tighten the coupling rods (6) to the new sewing feet (1).
15. Place and tension the conveyor belts (12) ( *Service Instructions*).
16. Insert the needle and assemble the rear cover (5).
17. Switch on and calibrate the machine ( *Service Instructions*).

2.2 Software settings



Important

The software must be updated to at least version A04.40.
How to perform the software update is described in the operating instructions of the class 650-10.



DÜRKOPP ADLER GmbH
Potsdamer Str. 190
33719 Bielefeld
Germany
Phone: +49 (0) 521 925 00
Email: service@duerkopp-adler.com
www.duerkopp-adler.com