

581

Additional Instructions

Fitting the sewing lamp

IMPORTANT
READ CAREFULLY BEFORE USE
KEEP FOR FUTURE REFERENCE

All rights reserved.

Property of Dürkopp Adler AG and protected by copyright. Any reuse of these contents, including extracts, is prohibited without the written approval in advance of Dürkopp Adler AG.

Copyright © Dürkopp Adler AG 2015

1	Components in the parts set	3
2	Fitting the sewing lamp.....	4
2.1	Removing components.....	5
2.2	Fitting the housing with printed circuit board	7

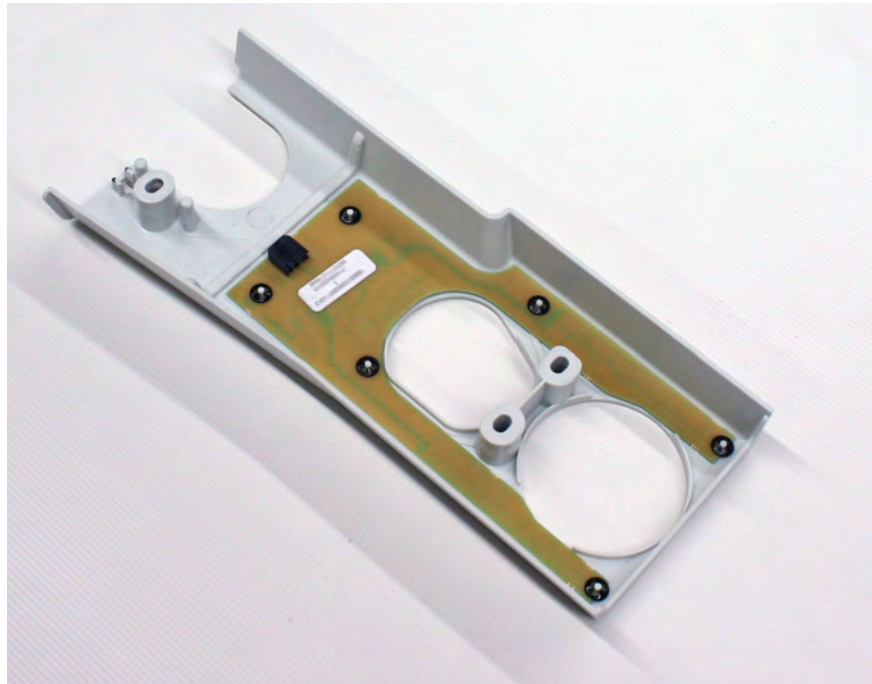
1 Components in the parts set

The parts set **0580 101644** is intended for class 581 machines.

Before fitting, check that the scope of delivery of the parts set is correct.

Part no.	Quantity	Designation
0791 581716 EN	1	Additional instructions
0580 101610	1	Housing
9352 000020	6	Clamping disk
9850 580007	1	Printed circuit board

Fig. 1: Parts set



2 Fitting the sewing lamp

WARNING



Risk of electric shock from live parts!

Dangerous injuries to life and limb possible.

The sewing light may only be fitted by qualified specialists.

Switch off the machine and unplug the power plug.

Make sure the power plug cannot be unintentionally reinserted.

In order to be able to fit the parts set, you must remove the existing components.

When doing so, comply with the following




Sequence:

1. Remove the clamping plates.
2. Remove the finger protection.
3. Detach the housing.
4. Detach the head cover.
5. Remove the head cover.
6. Remove the housing.

Now you can fit the new housing with the printed circuit board.

2.1 Removing components

A description of how to remove the clamping plates is provided in the  *Operating Instructions*.

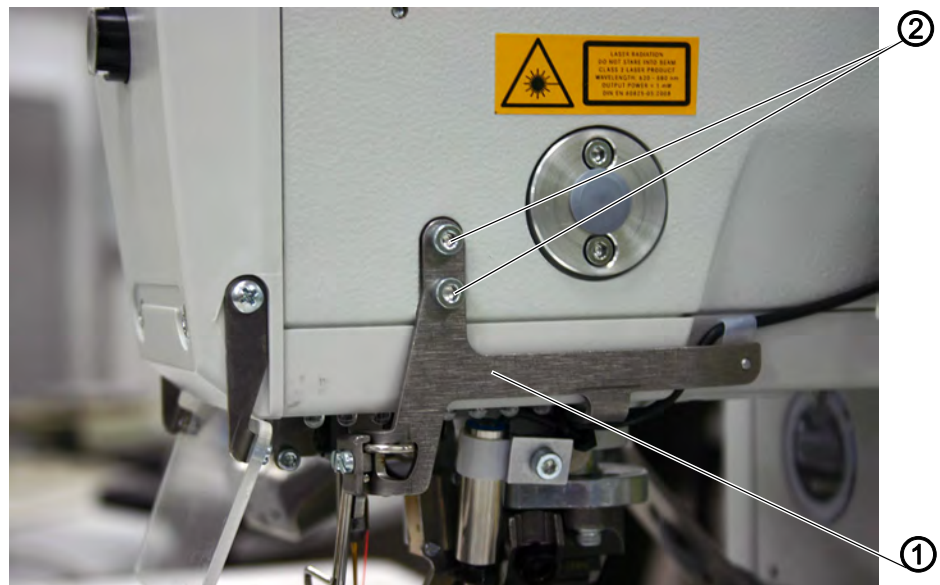
To remove the other components:



Step

1. Remove the screws (2).
2. Remove the finger protection (1).

Fig. 2: Removing the finger protection



(1) - Finger protection

(2) - Screws

3. Remove 3 screws (3) (width across flats 3) from the housing for the drive belts (4).

Fig. 3: Detaching the housing



(3) - Screws

(4) - Housing

4. Loosen the screws on the head cover (5).
5. Remove the head cover (5).
6. Remove the housing for the drive belts (4).

Fig. 4: Removing the head cover



(5) - Head cover

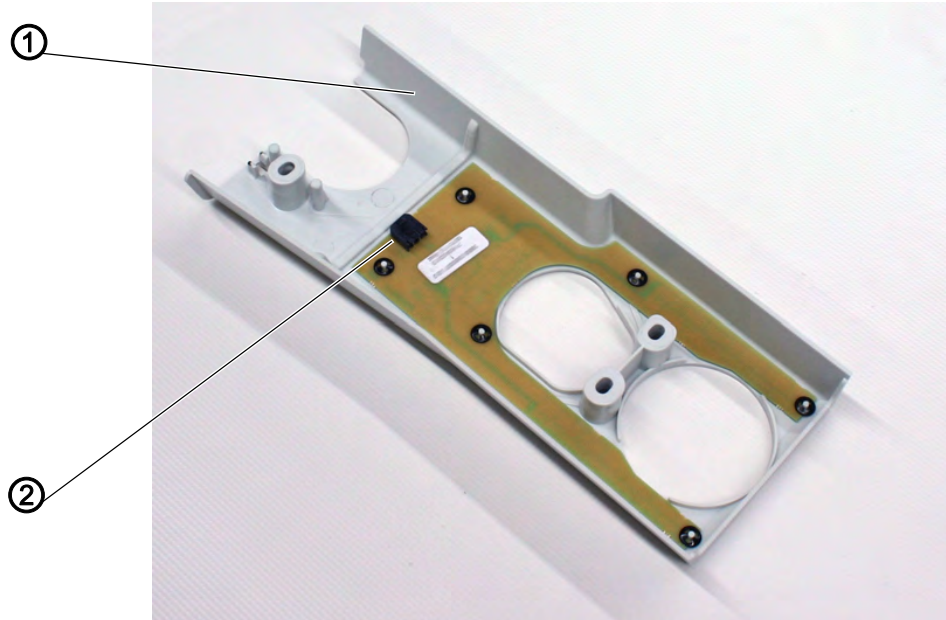
2.2 Fitting the housing with printed circuit board



Step

1. Place the housing (1) with preassembled printed circuit board under the sewing head.

Fig. 5: Housing with printed circuit board



(1) - Housing


(2) - Printed circuit board


2. Connect the **X411** cable (3) to the tab connector of the printed circuit board (2).

Fig. 6: Connecting the cable



(3) - X411 cable

3. Secure the housing with the 3 screws ( 2.1 Removing components, pg. 5).

4. Retighten the head cover.
5. Fit the finger protection.
6. Insert the clamping plates (see  *Operating Instructions*).



DÜRKOPP ADLER AG
Potsdamer Str. 190
33719 Bielefeld
Germany
Phone: +49 (0) 521 925 00
E-mail: service@duerkopp-adler.com
www.duerkopp-adler.com